

# Geographic Information Systems

330 W. Ponce de Leon Ave, Ste. 400  
Decatur, GA 30030

June 21, 2018



# Geographic Information Systems Department (GIS)

## What is GIS?

A geographic information system (GIS) is a framework for gathering, managing, and analyzing data. Rooted in the science of geography, GIS integrates many types of data. It analyzes spatial location and organizes layers of information into visualizations using maps and 3D scenes. With this unique capability, GIS reveals deeper insights into data, such as patterns, relationships, and situations—helping users make smarter decisions.



## KEY FACTS

735,690

Population



2.5

Average Household Size

35.6

Median Age

\$54,008

Median Household Income

## EDUCATION

11%

No High School Diploma



20%

High School Graduate



26%

Some College



43%

Bachelor's/Grad/Prof Degree

## BUSINESS



26,888

Total Businesses



320,210

Total Employees

## EMPLOYMENT



White Collar

68%



Blue Collar

17%



Services

15%



7.2%

Unemployment Rate

## INCOME



\$54,008

Median Household Income



\$32,049

Per Capita Income



\$47,516

Median Net Worth

## Households By Income

The largest group: \$50,000 - \$74,999 (18.6%)

The smallest group: \$150,000 - \$199,999 (5.2%)

Indicator ▲	Value	Difference	
<\$15,000	12.5%	-0.3%	
\$15,000 - \$24,999	9.9%	-2.2%	
\$25,000 - \$34,999	9.4%	-3.8%	
\$35,000 - \$49,999	14.0%	-3.3%	
\$50,000 - \$74,999	18.6%	-2.6%	
\$75,000 - \$99,999	11.2%	+0.3%	
\$100,000 - \$149,999	12.9%	+3.6%	
\$150,000 - \$199,999	5.2%	+3.1%	
\$200,000+	6.4%	+5.2%	



DeKalb County  
GEORGIA

# Population

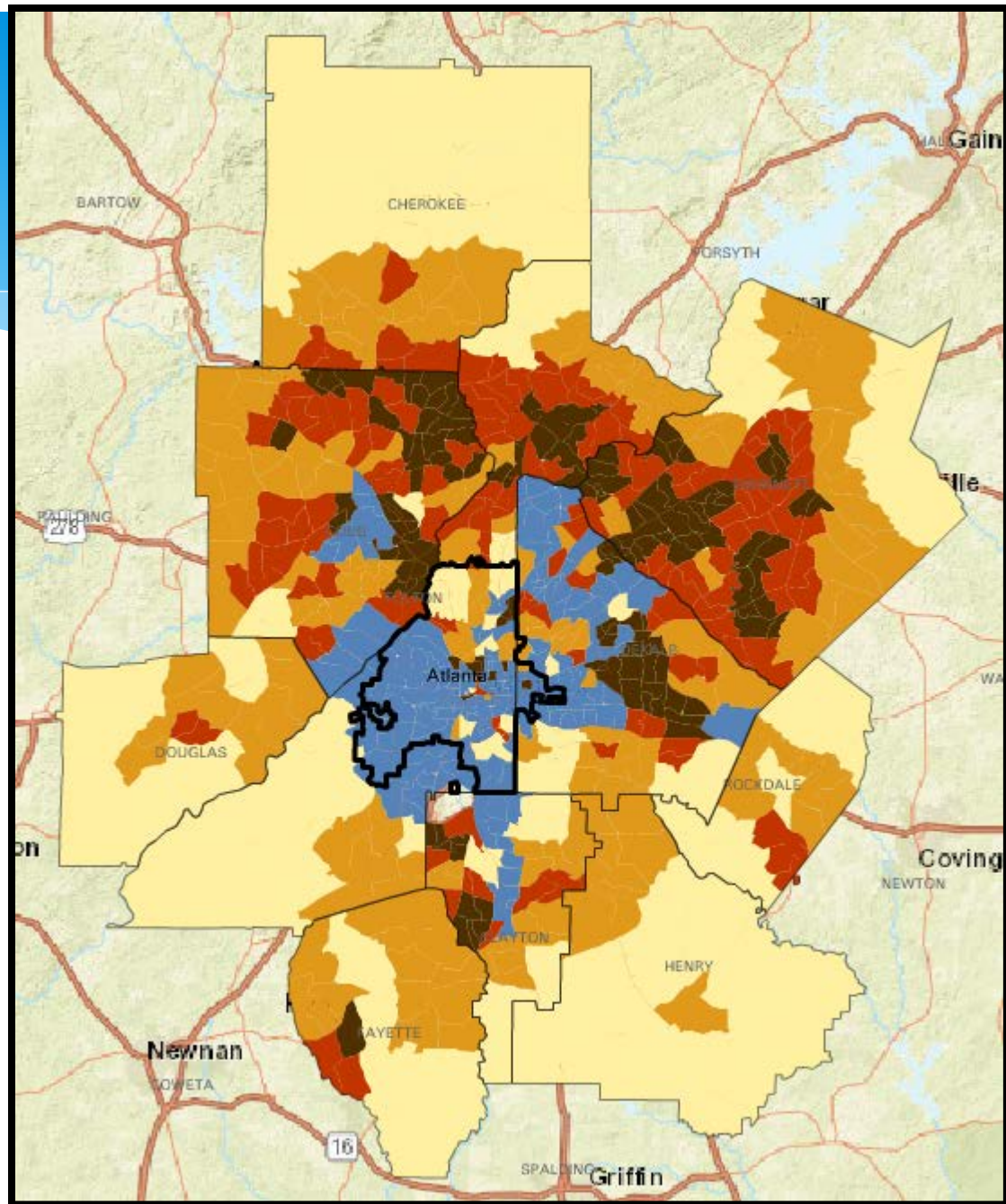


# Population Growth by Decade, 1980-1990

Strong Population  
Growth



Population Decline



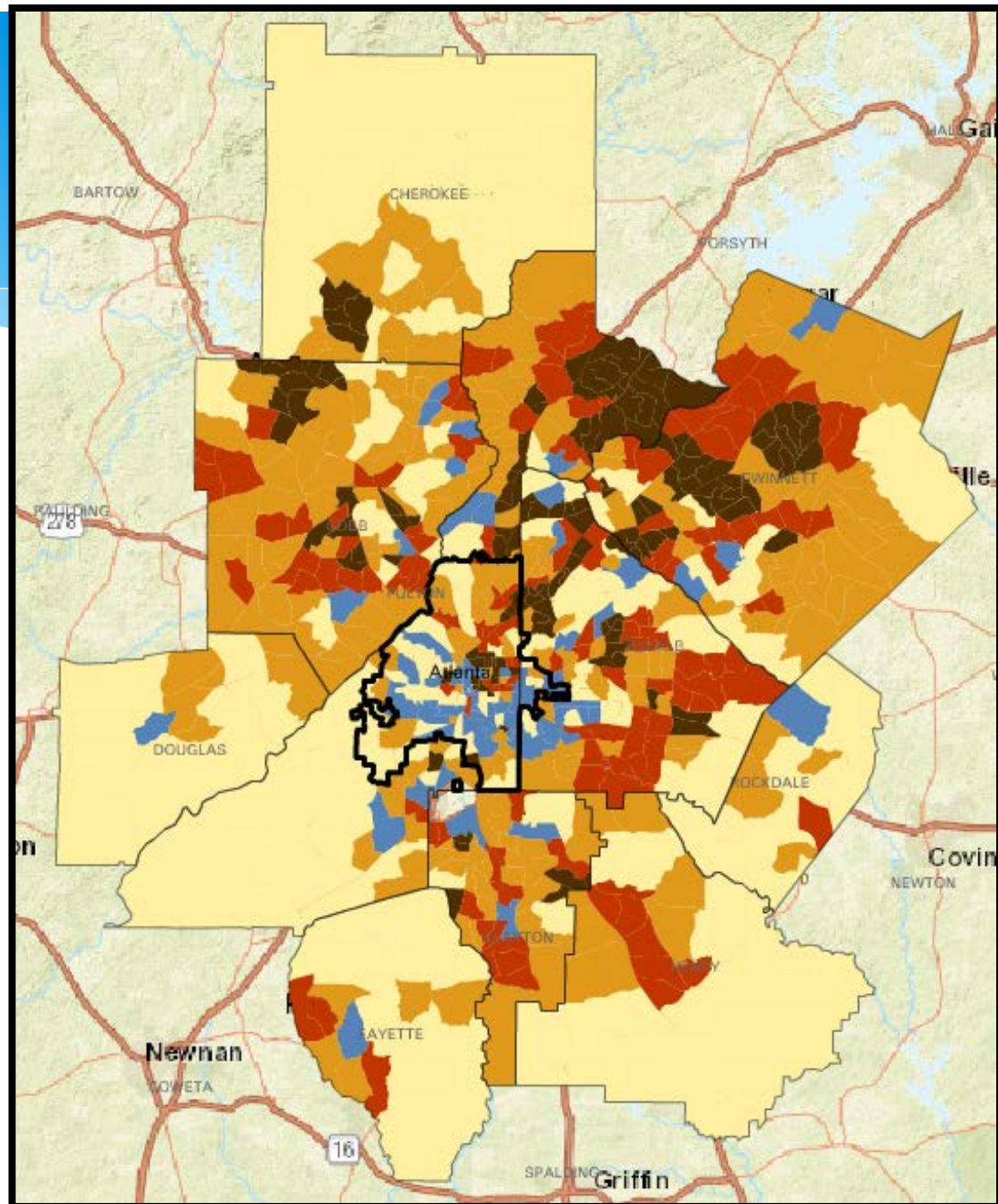


# Population Growth by Decade, 1990-2000

Strong Population  
Growth



Population Decline

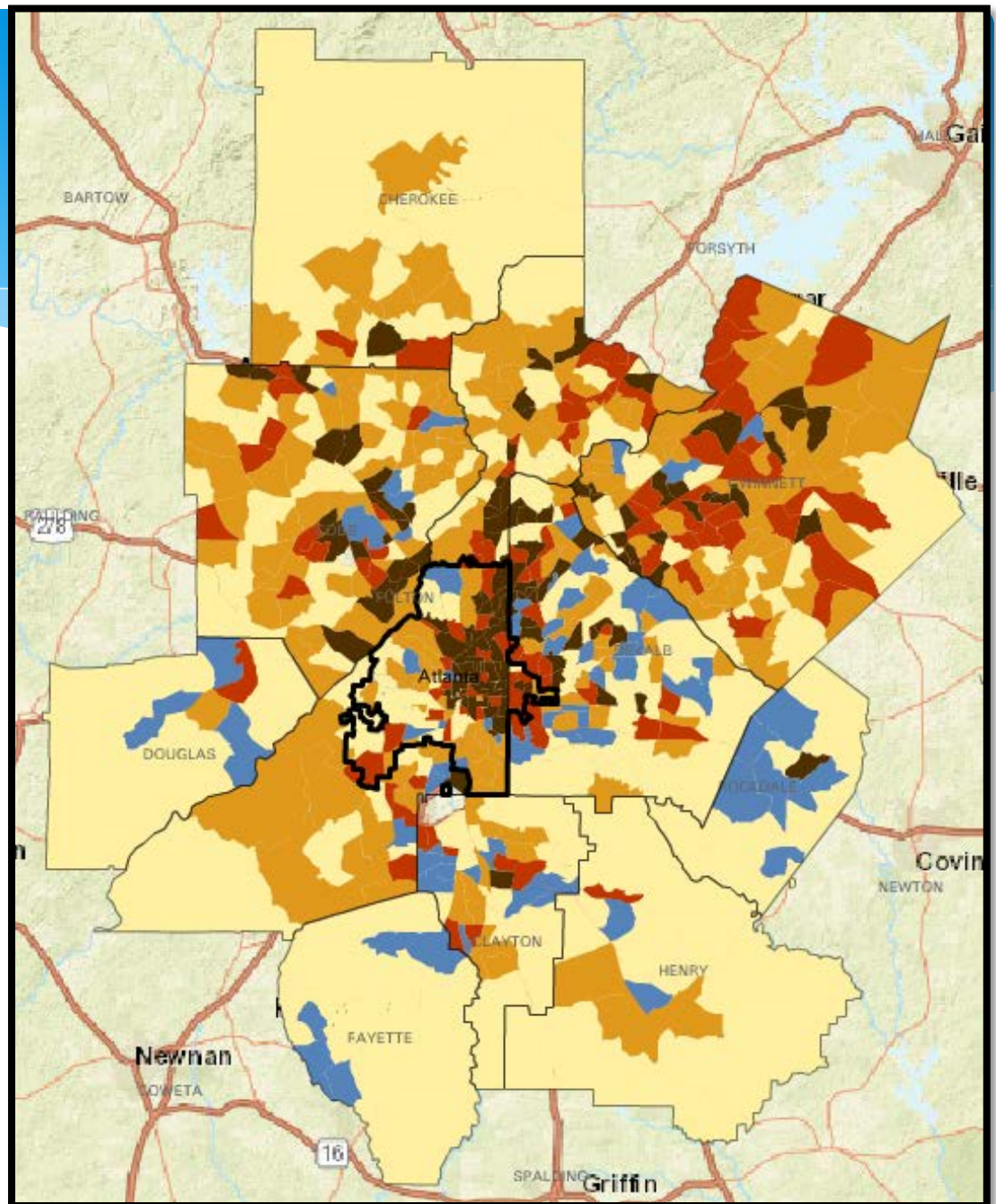


# Population Growth by Decade, 2010-2016

Strong Population  
Growth

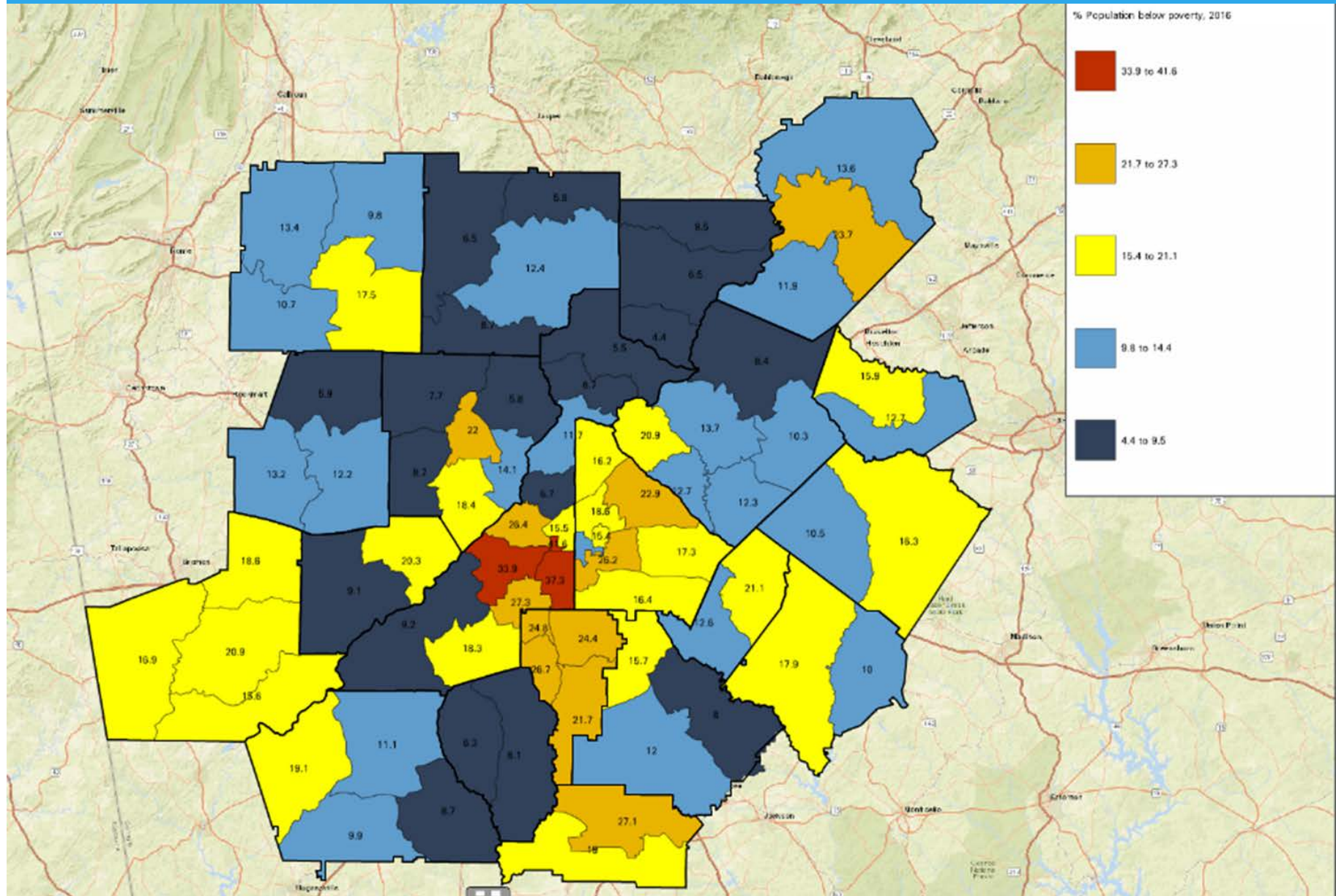


Population Decline





# Poverty Districts



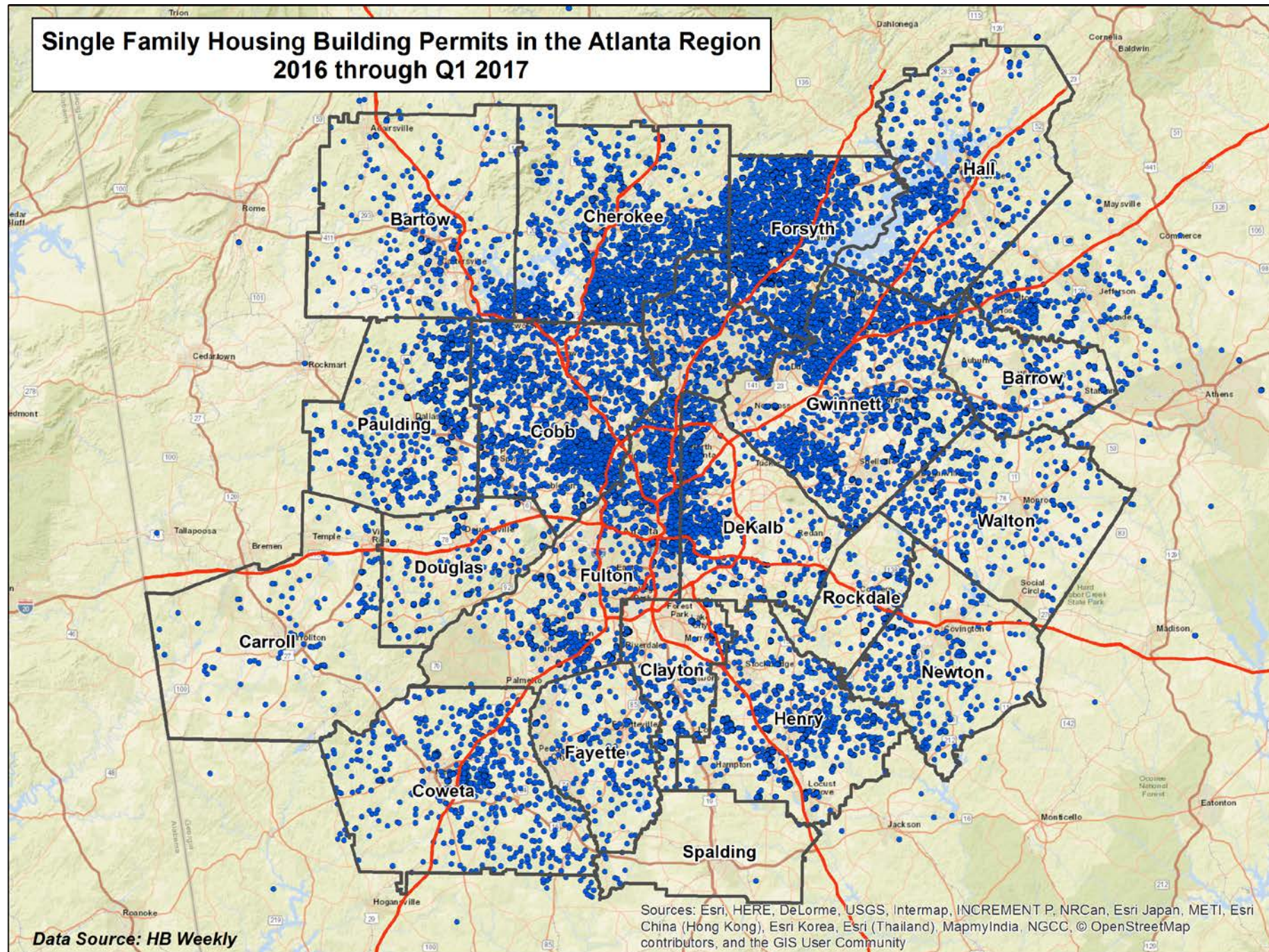


# Housing



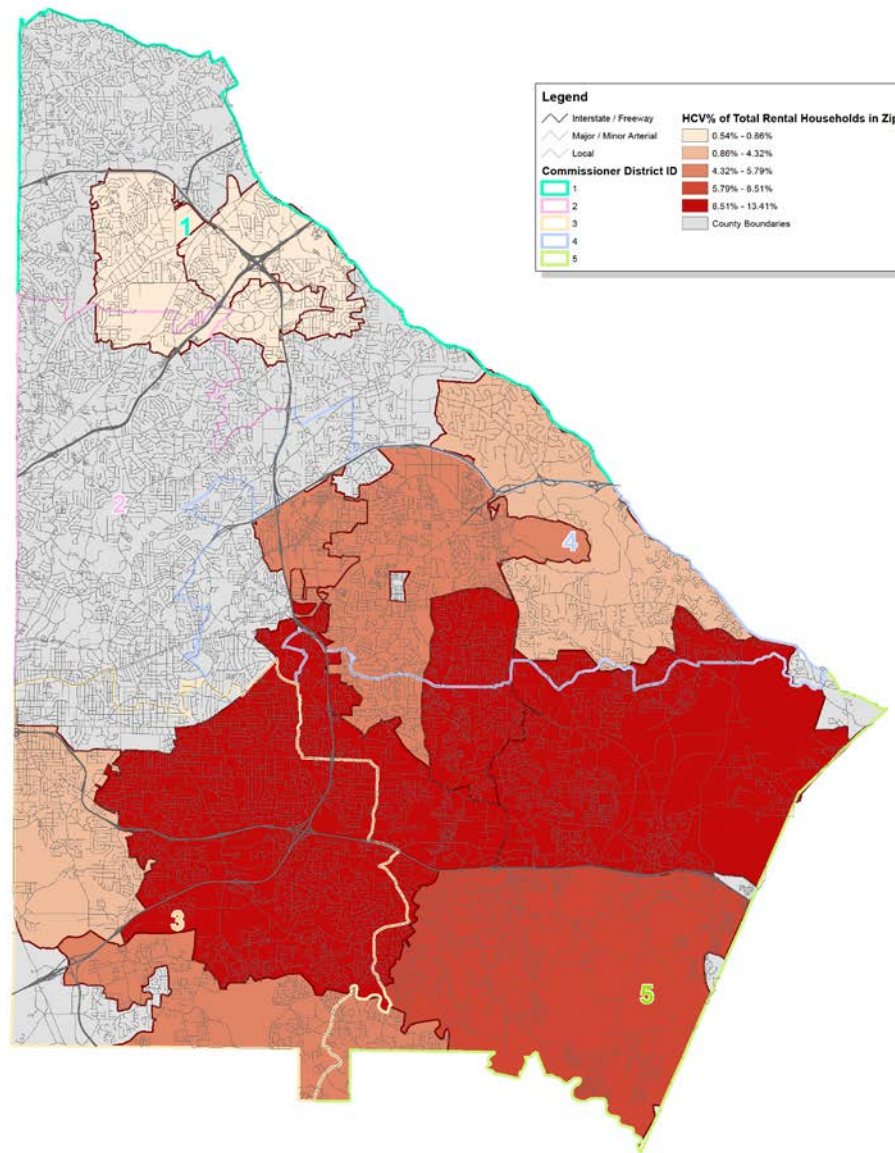


# Single Family Housing Building Permits in the Atlanta Region 2016 through Q1 2017





# Housing Choice Vouchers



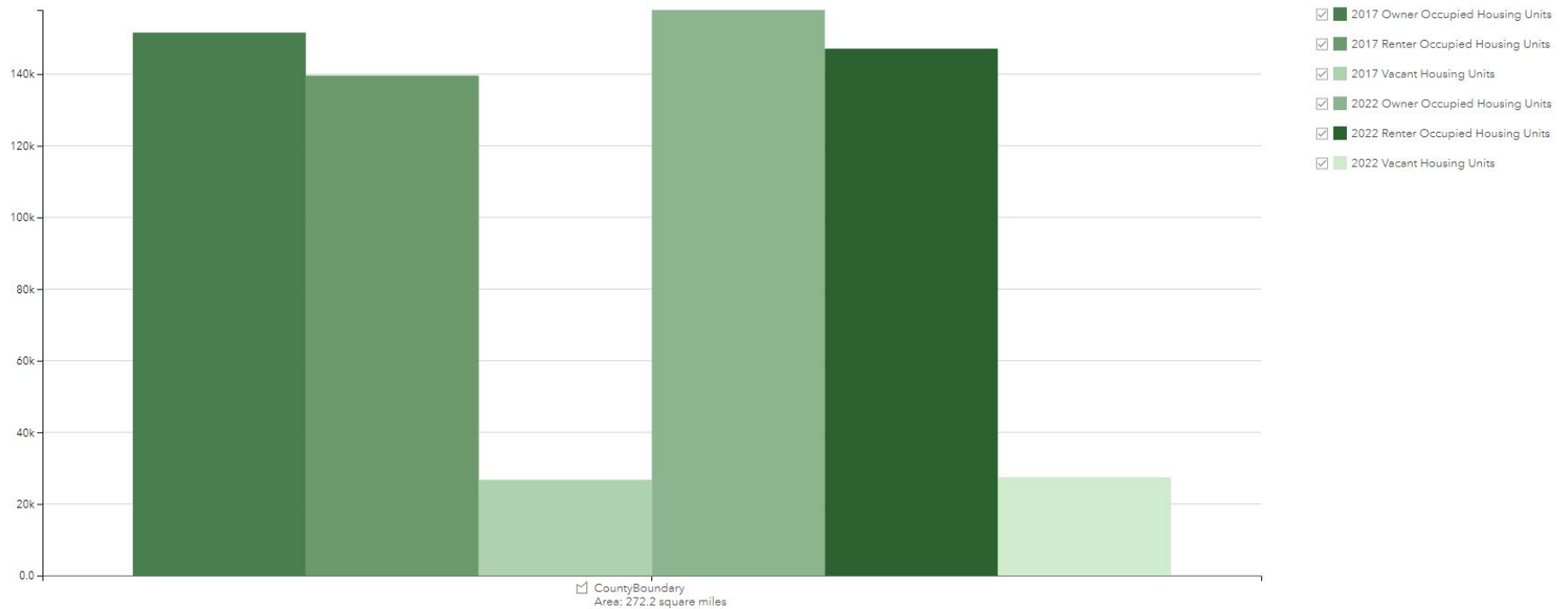
**Housing Choice Voucher Holders**  
DeKalb County, GA  
Geographic Information Systems Department



Map produced by the GIS Department  
DeKalb County, Georgia  
Map Date: 10/2011  
Map Project: 10/2011



# Housing Units



## A photograph of a residential property. In the background is a single-story house with blue horizontal siding and white trim around the windows and doors. A satellite dish is mounted on the roof. To the left of the house is a large, dense green tree. In the foreground, a red pickup truck is parked on a grassy lawn. In front of the truck is a white, single-axle utility trailer with a wooden ramp extended to the ground. Various items, including bags and debris, are scattered on the lawn. A timestamp in the bottom right corner reads "04/30/2012 14:58".



# Public Safety







## DeKalb County Significant Crime Density

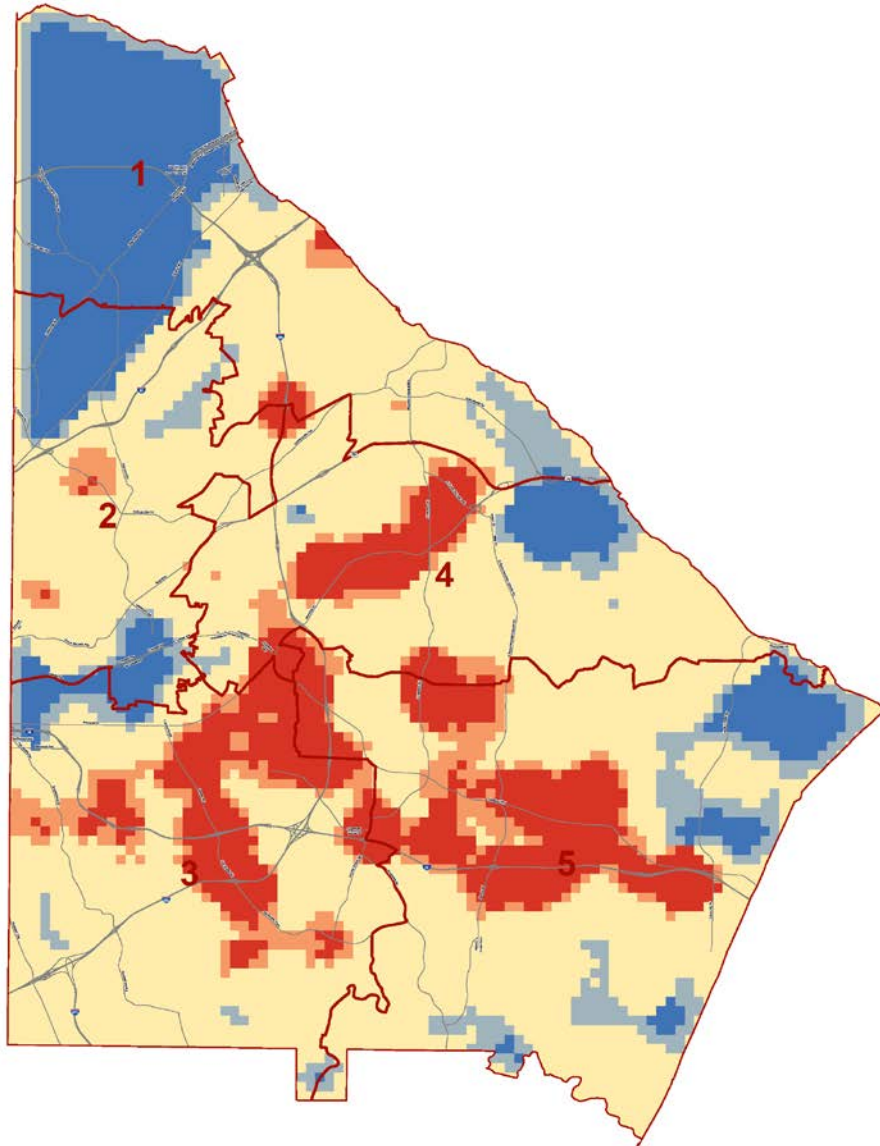
DeKalb County, GA  
Date Printed: 5/20/2018  
Data Source: DeKalb County GIS

**Legend**  
Commissioner District  
Major Road

**Significant Crime Density**  
Very Low  
Low  
Medium  
High  
Very High

0 0.95 1.9 3.8 Miles  
\*Significant crime incidents include aggravated assault, burglary, entering an automobile, homicide, rape, robbery and vehicle theft.

**DeKalb County GIS Disclaimer**  
The maps and data, contained on DeKalb County's Geographic Information System (GIS) are subject to constant change. While DeKalb County strives to provide accurate and up-to-date information, the information is provided "as is" without warranty, representation or guarantee of any kind as to the content, sequence, accuracy, timeliness or completeness of any of the database information provided herein. DeKalb County explicitly disclaims all representations and warranties, including, without limitation, the implied warranties of merchantability and fitness for a particular purpose. In no event shall DeKalb County be liable for any special, indirect, or consequential damages whatsoever resulting from loss of use, data, or profits, whether in an action of contract, negligence, or other actions, arising out of or in connection with the use of the maps and/or data herein provided. The maps and data are for illustrative purposes only and should not be relied upon for any reason. The maps and data are not suitable for site specific decision-making nor should it be construed or used as a legal description. The areas depicted by maps and data are approximate, and are not necessarily accurate to surveying or engineering standards.



Document Path: \\B-GIS\\Data\\Reports\\GIS\\DeKalbCountyCrime.mxd

# Significant Crime Density

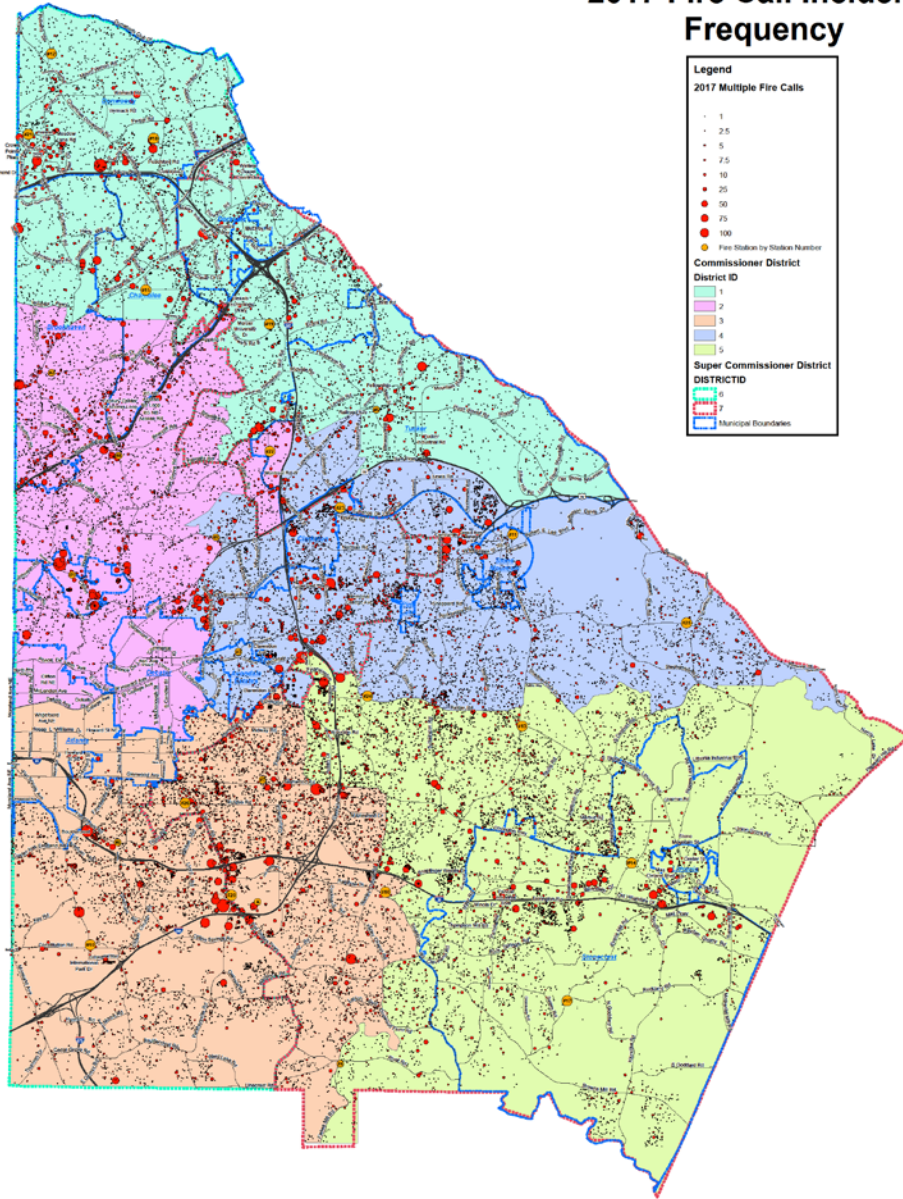
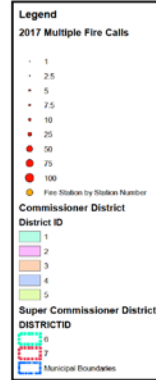


# Fire Call Incidents Heat Map





## 2017 Fire Call Incidents Frequency

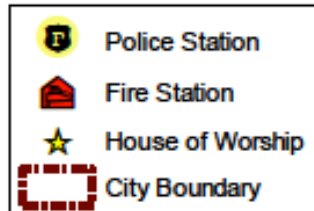


# Fire Call Incidents Frequency





# District 3



## Date Printed: 6/20/2018



**Definitive County GIS Disclaimer**  
The maps and data contained on Definitive County's Geographic Information System (GIS) are subject to constant change. While Definitive County strives to provide accurate and up-to-date information, the information is provided "as is" without warranty, representation or guarantee of any kind. It is the current, accurate, accurate, timeliness or completeness of any of the database information provided herein. Definitive County explicitly disclaims any liability for any errors or omissions in the data, and the user assumes all responsibility for any errors or omissions in the data. In no event shall Definitive County be liable for any special, indirect, or consequential damages whatsoever resulting from loss of use, data, profits, whether in an action of contract, negligence, or other actions, arising out of or in connection with the use of the maps and data herein provided. The maps and data are for illustration purposes only and should not be relied upon for any reason. The maps and data are not suitable for site-specific design, including but not limited to, engineering or legal design. The areas depicted by maps and data are approximate, and are not necessary accurate to survey or engineering standards.

## KEY FACTS

144,848

Population



2.6

Average Household Size

34.6

Median Age

\$47,162

Median Household Income

## EDUCATION

13%

No High School Diploma



23%

High School Graduate



31%

Some College



34%

Bachelor's/Grad/Prof Degree

## BUSINESS



4,134

Total Businesses



44,354

Total Employees

## EMPLOYMENT



63%

White Collar



20%

Blue Collar



16%

Services

10.2%

Unemployment Rate

## INCOME



\$47,162

Median Household Income



\$24,417

Per Capita Income



\$30,055

Median Net Worth

## Households By Income

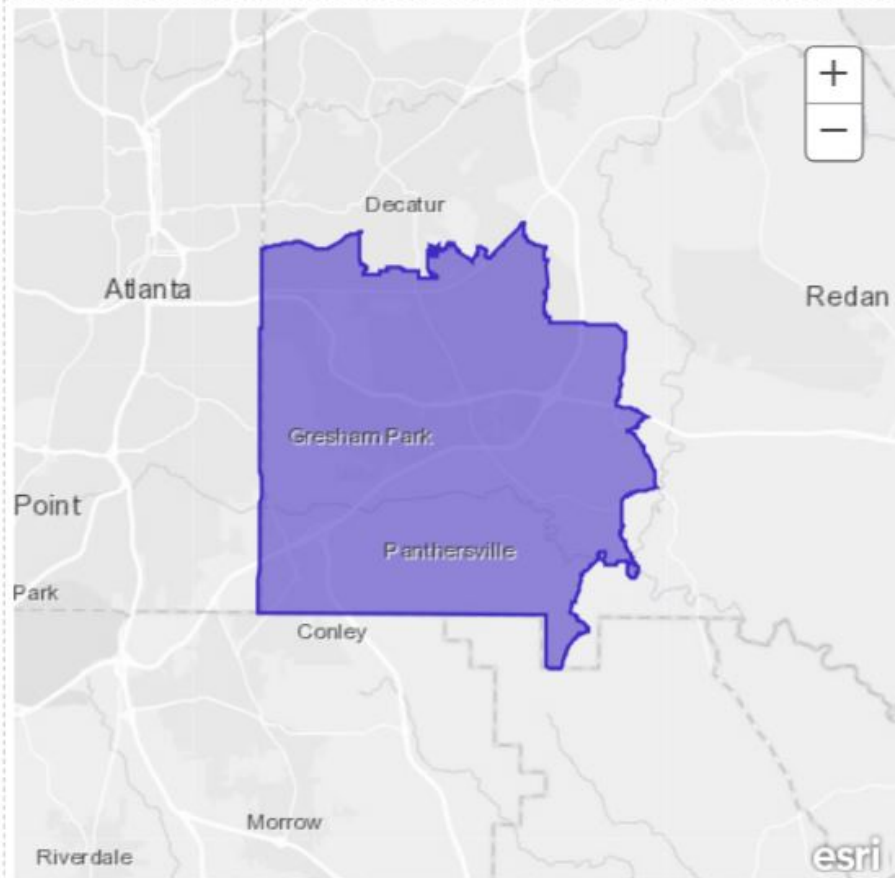
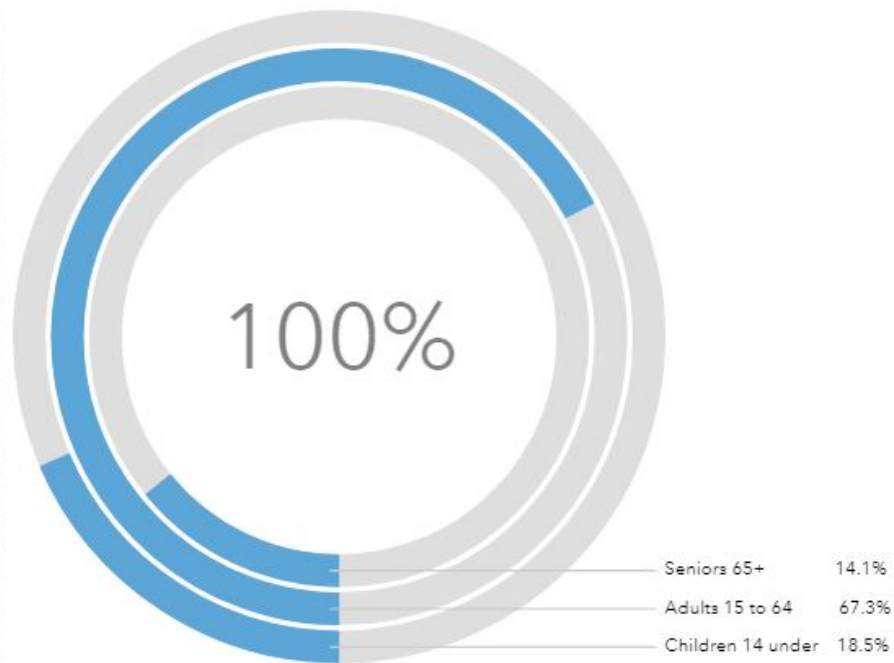
The largest group: \$50,000 - \$74,999 (18.5%)

The smallest group: \$200,000+ (2.4%)

Indicator ▲	Value	Difference	
<\$15,000	13.4%	+0.9%	
\$15,000 - \$24,999	11.7%	+1.8%	
\$25,000 - \$34,999	11.6%	+2.2%	
\$35,000 - \$49,999	15.5%	+1.5%	
\$50,000 - \$74,999	18.5%	-0.1%	
\$75,000 - \$99,999	11.2%	0	
\$100,000 - \$149,999	11.6%	-1.3%	
\$150,000 - \$199,999	4.0%	-1.2%	
\$200,000+	2.4%	-4.0%	



# At Risk Population



## AT RISK



13,262

Households With Disability



0

Pop 65+ No English



1,501

Households Without Vehicle

2010-2014 Population by Language Spoken at Home (ACS)	Total	Percent
Pop 65+ speak Oth Language & No English	0	0.0%
Pop 18-64 speak Spanish & No English	51	0.0%
Pop 18-64 speak Indo-European & No English	38	0.0%
Pop 18-64 speak Asian-Pacific Isl & No English	7	0.0%
Pop 18-64 speak Other Language & No English	0	0.0%
Pop 65+ speak Spanish & No English	0	0.0%
Pop 65+ speak Indo-European & No English	0	0.0%
Pop 65+ speak Asian-Pacific Isl & No English	0	0.0%

# District 4

## KEY FACTS

143,621

Population



Average  
Household Size

37.7

Median Age

\$46,068

Median Household  
Income

## EDUCATION

12%

No High  
School  
Diploma



30%

High School  
Graduate



29%

Some College



29%

Bachelor's/Grad/Prof  
Degree

## BUSINESS



3,628

Total Businesses



36,046

Total Employees

## EMPLOYMENT



65%

White Collar



18%

Blue Collar



17%

Services

10.1%

Unemployment  
Rate

## INCOME



\$46,068

Median Household  
Income



\$23,431

Per Capita Income



\$48,952

Median Net Worth

## Households By Income

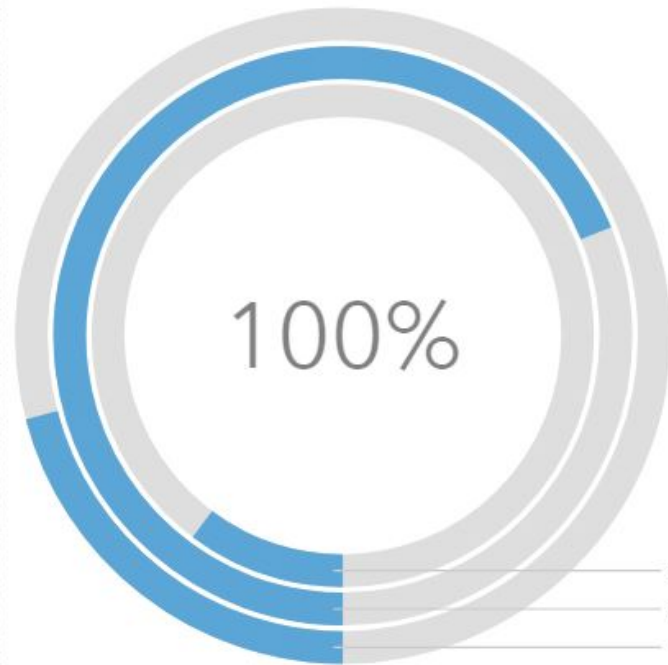
The largest group: \$50,000 - \$74,999 (20.5%)

The smallest group: \$200,000+ (2.0%)

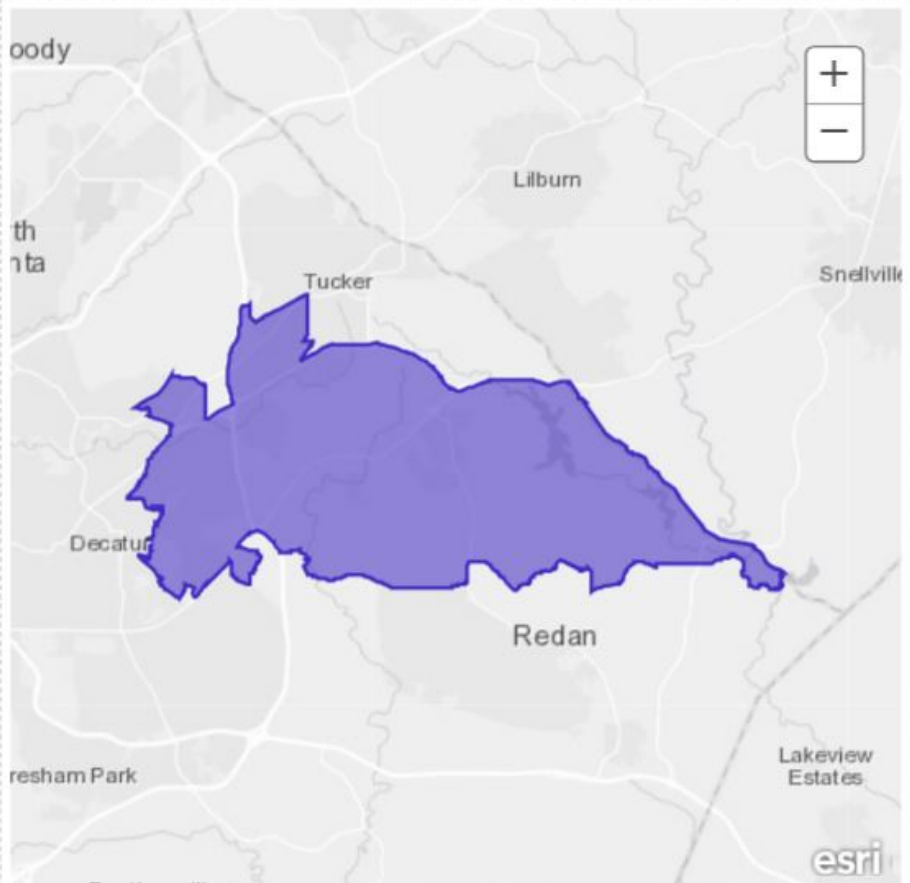
Indicator ▲	Value	Difference	
<\$15,000	15.0%	+2.2%	
\$15,000 - \$24,999	12.2%	+0.1%	
\$25,000 - \$34,999	10.4%	-2.8%	
\$35,000 - \$49,999	15.5%	-1.8%	
\$50,000 - \$74,999	20.5%	-0.7%	
\$75,000 - \$99,999	10.1%	-0.8%	
\$100,000 - \$149,999	11.0%	+1.7%	
\$150,000 - \$199,999	3.3%	+1.2%	
\$200,000+	2.0%	+0.8%	



# At Risk Population



Seniors 65+ 10.2%  
 Adults 15 to 64 68.9%  
 Children 14 under 20.9%



## AT RISK



11,450

Households With  
Disability



190

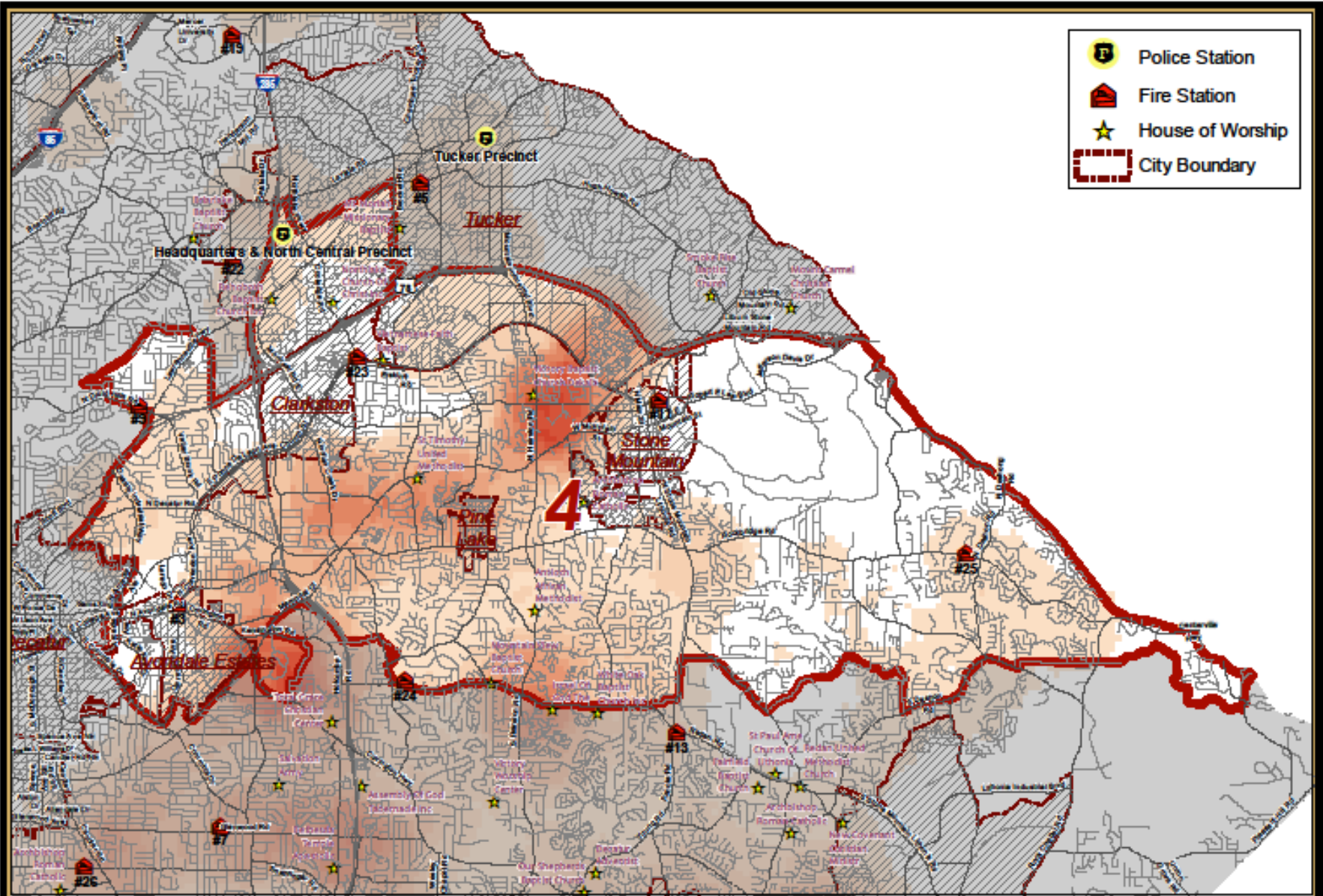
Pop 65+ No English



761

Households Without  
Vehicle

2010-2014 Population by Language Spoken at Home (ACS)	Total	Percent
Pop 65+ speak Oth Language & No English	190	0.1%
Pop 18-64 speak Spanish & No English	141	0.1%
Pop 18-64 speak Indo-European & No English	532	0.4%
Pop 18-64 speak Asian-Pacific Isl & No English	406	0.3%
Pop 18-64 speak Other Language & No English	224	0.2%
Pop 65+ speak Spanish & No English	0	0.0%
Pop 65+ speak Indo-European & No English	398	0.3%
Pop 65+ speak Asian-Pacific Isl & No English	133	0.1%



## Violent Crime Areas (Jan 2017 - May 2018)

### Commissioner District 4 - DeKalb County, GA

Date Printed: 8/20/2018



**DeKalb County GIS Disclaimer:**  
The maps and data, contained in DeKalb County's Geographic Information System (GIS) are subject to content change. While DeKalb County strives to provide accurate and up-to-date information, the information is provided "as is" without warranty, representation or guarantee of any kind as to the content, sequence, accuracy, timeliness or completeness of any of the data/information provided herein. DeKalb County explicitly disclaims all representations and warranties, including, without limitation, the implied warranty of merchantability and fitness for a particular purpose. In no event shall DeKalb County be liable for any special, indirect, or consequential damages whatsoever resulting from loss of use, data, or profits, whether in an action of contract, negligence, or other actions, arising out of or in connection with the use of the maps and/or data herein provided. The maps and data are for illustration purposes only and should not be relied upon for any reason. The maps and data are not suitable for site-specific decision-making nor should it be construed or used as a legal description. The areas depicted by maps and data are approximate, and are not necessarily accurate to surveying or engineering standards.

# District 5



## KEY FACTS

144,505

Population



Average  
Household Size

34.0

Median Age

\$48,276

Median Household  
Income

## EDUCATION

8%

No High  
School  
Diploma



25%

High School  
Graduate



37%

Some College



29%

Bachelor's/Grad/Prof  
Degree

## BUSINESS



3,507

Total Businesses



36,666

Total Employees

## EMPLOYMENT



65%

White Collar



19%

Blue Collar



15%

Services



Unemployment  
Rate

## INCOME



\$48,276

Median Household  
Income



\$22,627

Per Capita Income



\$39,952

Median Net Worth

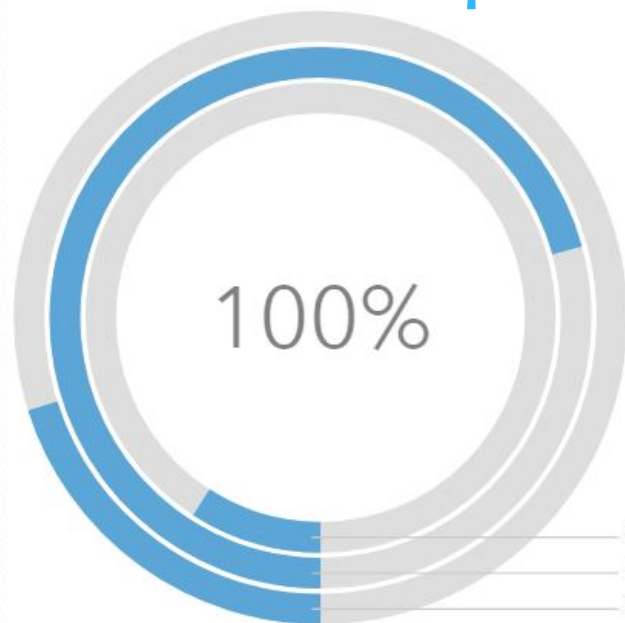
## Households By Income

The largest group: \$50,000 - \$74,999 (21.0%)

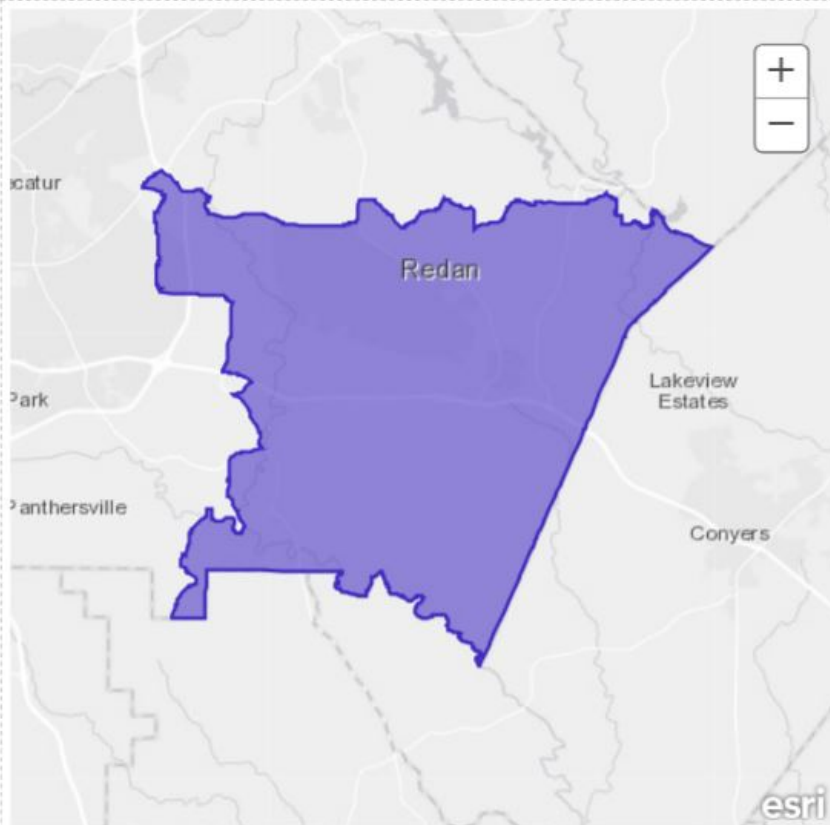
The smallest group: \$200,000+ (1.9%)

Indicator ▲	Value	Difference	
<\$15,000	13.5%	+1.0%	
\$15,000 - \$24,999	10.1%	+0.2%	
\$25,000 - \$34,999	10.7%	+1.3%	
\$35,000 - \$49,999	17.2%	+3.2%	
\$50,000 - \$74,999	21.0%	+2.4%	
\$75,000 - \$99,999	12.1%	+0.9%	
\$100,000 - \$149,999	10.5%	-2.4%	
\$150,000 - \$199,999	3.1%	-2.1%	
\$200,000+	1.9%	-4.5%	

# At Risk Population



Seniors 65+ 9.1%  
 Adults 15 to 64 70.8%  
 Children 14 under 20.1%



## AT RISK



11,905

Households With  
Disability



0

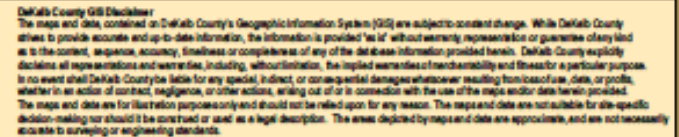
Pop 65+ No English



554

Households Without  
Vehicle

2010-2014 Population by Language Spoken at Home (ACS)	Total	Percent
Pop 65+ speak Oth Language & No English	0	0.0%
Pop 18-64 speak Spanish & No English	92	0.1%
Pop 18-64 speak Indo-European & No English	16	0.0%
Pop 18-64 speak Asian-Pacific Isl & No English	56	0.0%
Pop 18-64 speak Other Language & No English	47	0.0%
Pop 65+ speak Spanish & No English	0	0.0%
Pop 65+ speak Indo-European & No English	0	0.0%
Pop 65+ speak Asian-Pacific Isl & No English	21	0.0%







\*Questions?